

SCRIPT

Building Research Capacity in Social Care



ASCENT

From SCRIPT to ASCENT



29 NOV



9.45
to
15.00



Friends House
London

HYBRID
EVENT

Join us to hear about the final results of the SCRIPT Study
(Social Care Research in Practice Teams).

We will discuss lessons learned from the SCRIPT study. We will also discuss recommendations for future initiatives in building research capacity in social care settings. Finally, we will demonstrate how some of the learning from SCRIPT has been applied in the new activities funded by the ASCENT programme.

The meeting will take place at Friends House, and the event will be streamed live for those who would like to join us remotely.

Food and refreshments will be provided, and the venue is conveniently located close to Euston and King's Cross stations.

[REGISTER HERE](#)

 Limited number of face-to-face tickets

18th October 2024
Registration opens

 Unlimited tickets for online attendance

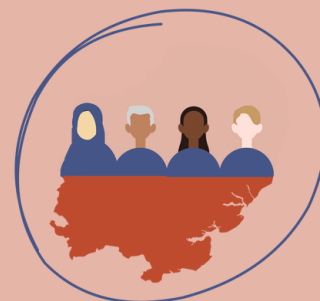
28th November 2024
Registration closes

If you wish to attend the event face-to-face, but would need support to cover your travel costs, please do not hesitate to get in touch with:

Lida Efsthathopoulou at l.g.efsthathopoulou@herts.ac.uk



Building Research Capacity in Social Care



ASCENT

From SCRIPT to ASCENT

09.45 – 10.30 *Registration and networking, coffee and tea*

10.30 – 10.45 **From SCRIPT to ASCENT: Strengthening our social care research network in the East of England**

Kathryn Almack & Eneida Mioshi

10.45 – 11.15

Research in Practice Team Leads (RiPT) research projects: Final results

Chair: Kathryn Almack. Updates and presentations of the RiPT projects led by Sophie Tooke, Chris Metcalf, Tom Swinson and Toby Connell

11.15 – 11.45 *Coffee break*

11.45 – 12.30

Lessons Learned from the SCRIPT Study

Chair: Jennifer Lynch. Panel: Chris Metcalf, Toby Connell, Tom Swinson, Lida Efstathopoulou, Giles Connelly, Expert by Experience (TBC)

12.30 – 13.30 *Lunch Break*

13.30 – 14.00

Involving people who access care in social care research

Chair: Ana-Maria Bilciu. Panel: Experts by Experience (TBC)

14.00 – 14.30

ASCENT: New initiatives and examples on developing research capacity in social care across East of England

Eneida Mioshi, Kathryn Almack, Lida Efstathopoulou

14.30 – 14.45

Closing remarks

15.00 *Meeting closes, refreshments and networking*