



NIHR ARC East of England Fellows' Showcase 2024

Thursday 7 March 2024 | 10:00 - 15:40
Cambridge Belfry Hotel, CB23 6BW

Programme

9:30 - 10:00 | Arrivals at Peterhouse Room at the Cambridge Belfry Hotel, Back Lane, Cambourne, Cambridge CB23 6BW. This includes refreshments and poster viewing.



10:00 - 10:10 | Welcome and introductions by Professor Wendy Wills, Director, NIHR ARC East of England

Session 1 | Chaired by Dr Christine Hill, NIHR ARC East of England



10:10 - 10:20 | 'How do GP practices in Norfolk arrange and carry out long-term condition reviews?' by Dr Jennifer Cole, Attleborough Surgery, Norfolk



10:20 - 10:30 | 'Assessing equality of access and provision of Palliative and End of Life Care in a Coastal Community: A mixed methods study' by Dr Abigail Hensley, Norfolk and Norwich University Hospitals NHS Foundation Trust



10:30 - 10:40 | 'A systematic review of clinical signs and symptoms in large airway collapse (LAC)' by Chelliah Paramasivan, Cambridge University Hospitals NHS Foundation Trust



10:40 - 10:50 | 'Non pharmacological interventions in young adult patients with hypertension: an overview of systematic reviews' by Evita Pappa, Cambridge University Hospitals NHS Foundation Trust



10:50 - 11:00 | 'What are the benefits and clinical outcomes of Occupational Therapy within the intensive care unit?' by Abigail Duffield, James Paget University Hospitals NHS Foundation Trust

11:00 - 11:15 | Session 1 Q&A led by Dr Christine Hill

11:15 - 11:30 | Refreshments and poster viewing

Programme

Session 2 | Chaired by Sophie Knight, Health Innovation East



11:30 - 11:40 | 'Improving access to Primary care' by Dr Katy Horder, Mill Road Surgery, Cambridge



11:40 - 11:50 | 'Community evaluation of a patient-led approach to rare disease research' by Laura Cowley, Cambridge University Hospitals NHS Foundation Trust



11:50 - 12:00 | 'Family History of Cancer in Primary Care: Are there missed opportunities for GPs to enact referral to clinical genetics for tailored risk stratified screening' by Dr Matthew Crowson, Great Staughton GP Surgery, St Neots



12:00 - 12:10 | 'Making Supported Self-Management advice and services more easily accessible to local people with Inflammatory Arthritis' by Sarah Small, James Paget University Hospitals NHS Foundation Trust

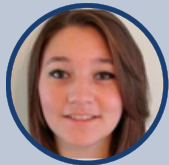
12:10 - 12:25 | Session 2 Q&A led by Sophie Knight

12:25 - 13:30 | Lunch and poster viewing

Session 3 | Chaired by Professor Kristy Sanderson, NIHR ARC East of England



13:30 - 13:40 | 'Exploring effective mental health interventions for people experiencing homelessness' by Jenny Walker, Norfolk and Suffolk NHS Foundation Trust



13:40 - 13:50 | 'Characterising the depression pathway through primary and secondary care: an epidemiological study of patient cohort, diagnostic variation, comorbidities, and treatment management' by Dr Laura Angco, Staploe Medical Centre, Ely



13:50 - 14:00 | 'Maintaining Hope: A Challenging Introduction to Research' by Megan Thody, Cambridgeshire and Peterborough NHS Foundation Trust



14:00 - 14:10 | 'A breakdown of medicines prescribed to older adults with a diagnosis of personality disorder' by Suzie Valentine Crow, Cambridgeshire and Peterborough NHS Foundation Trust

14:10 - 14:25 | Session 3 Q&A led by Professor Kristy Sanderson

14:25 - 14:40 | Refreshments and poster viewing

Programme

Session 4 | Chaired by Professor Kathryn Almack, NIHR ARC East of England



14:40 - 14:50 | 'The Social Care Occupational Therapy and Learning Disabilities Study: Professional Perspectives of Communication, Collaboration and Outcomes' by Tom Swinson, Hertfordshire County Council



14:50 - 15:00 | "Who are they who are there? Feelings of uncertainty about my care and "assessment" by Toby Connell, Norfolk County Council



15:00 - 15:10 | "How much will you share for care?" by Chris Metcalf, Norfolk County Council

15:10 - 15:25 | Session 4 Q&A led by Professor Kathryn Almack

15:25 - 15:40 | Poster awards and close by Professor Wendy Wills

More information

Learn more about the ARC East of England Fellowship programme:

arc-oe.nihr.ac.uk/training-development/arc-research-and-implementation-fellowships

Read more about the current fellows:

arc-oe.nihr.ac.uk/training-development/arc-research-and-implementation-fellowships/fellows

Thank you for joining us at NIHR ARC East of England Fellowship Showcase 2024