

MEDAL Study - Workshop

Developing Plans for an **Innovation Hub** to Model how Dyads (Patient and Carer) access and navigate health and Care Services.

Modelling the Experience of Living with Dementia and Other Long Term Conditions

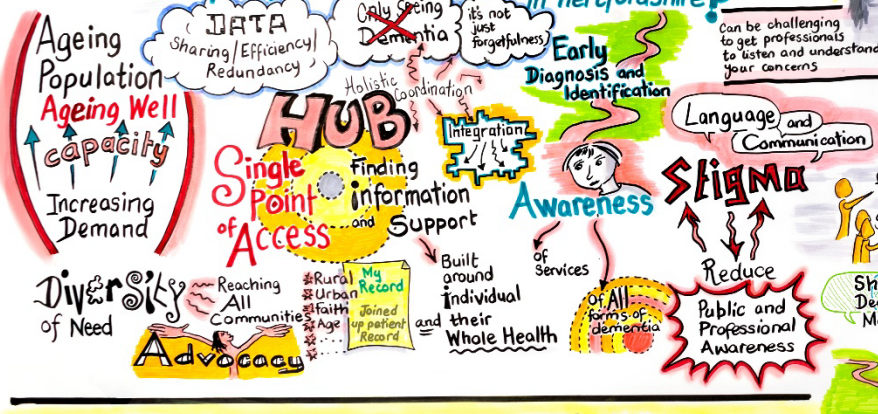
- Healthy Ageing is a Key Priority
- Dementia complicates Access to Care.
- Treatment and Support for other Long Term Conditions
- Core to reducing Inequalities and Improving Access and Navigating Health and Care Services is to:
 - Minimise burden of Self-Management and Care
 - Welcome involvement from family carers (and other key supporters)
 - Reduce diagnostic Overshadowing (missing or mis-diagnosing other illnesses)



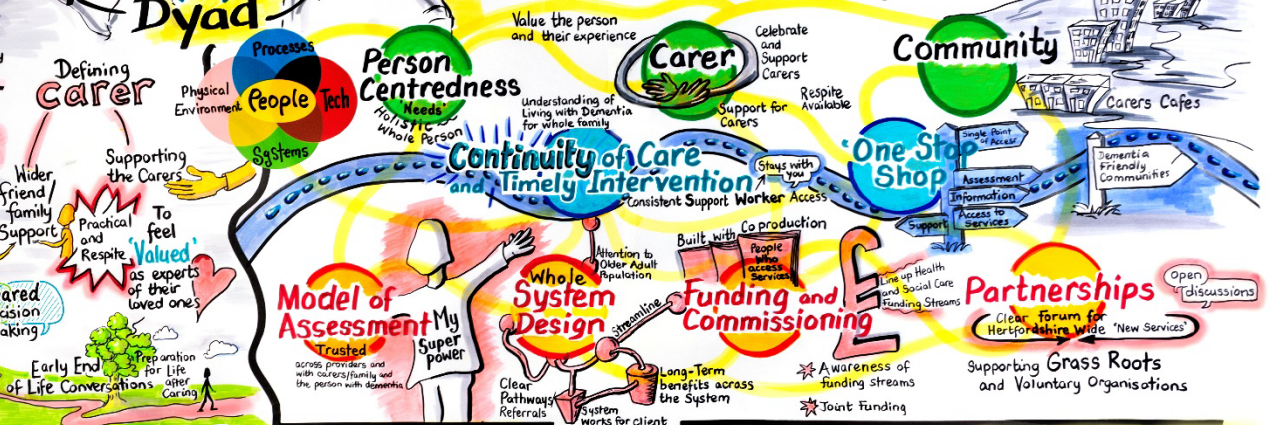
Workstreams

- Realist Review - What happens now
- Co-production - Involve People with Lived Experience and Professional Experience
- Mathematical Modelling - Build Scalable and Transferable (different Conditions, different Places) Simulation Models

What people see as the Key Priorities and Challenges in Hertfordshire?



What would you like to Change and How?



How can we make the 'Case for Change'?

