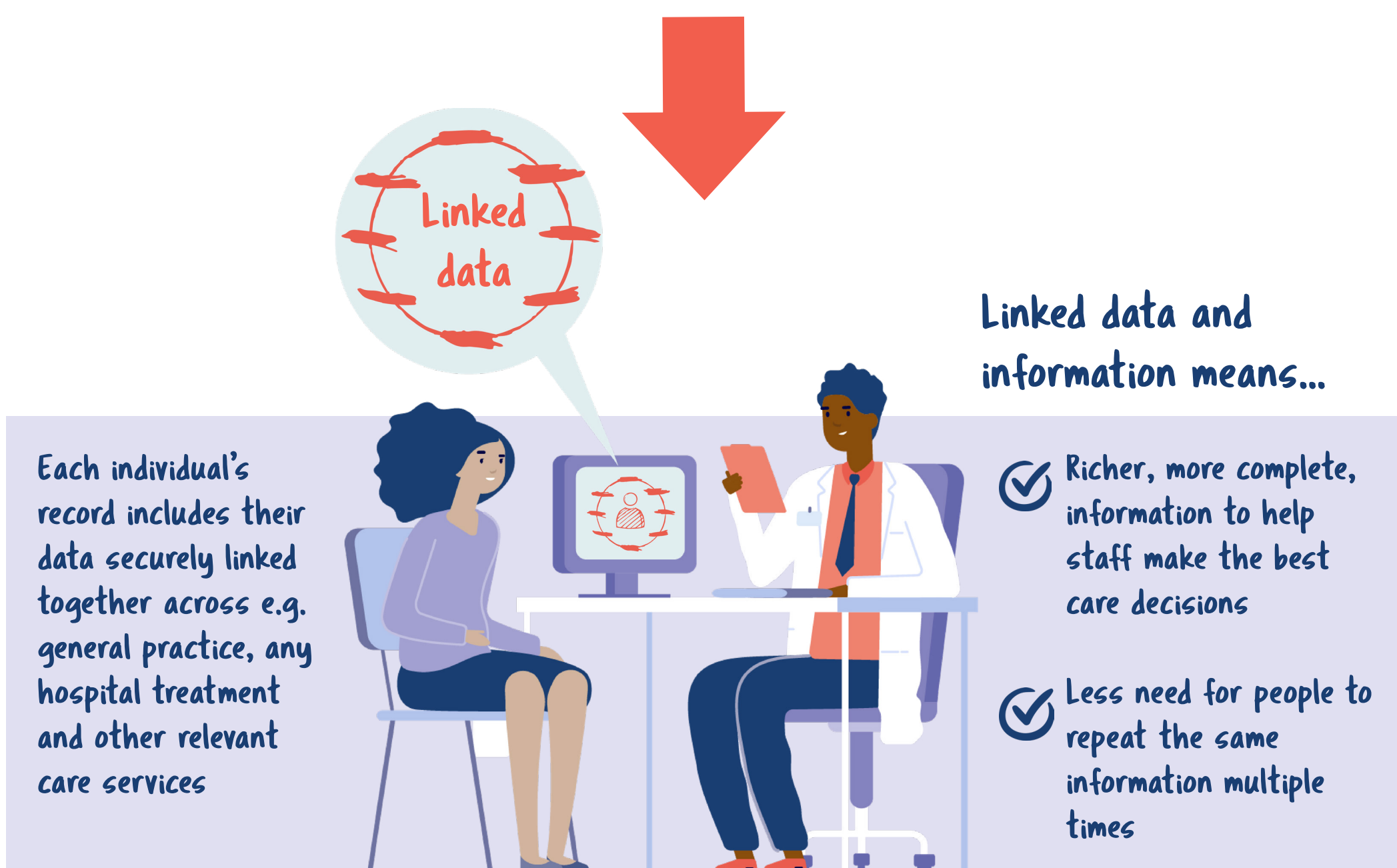
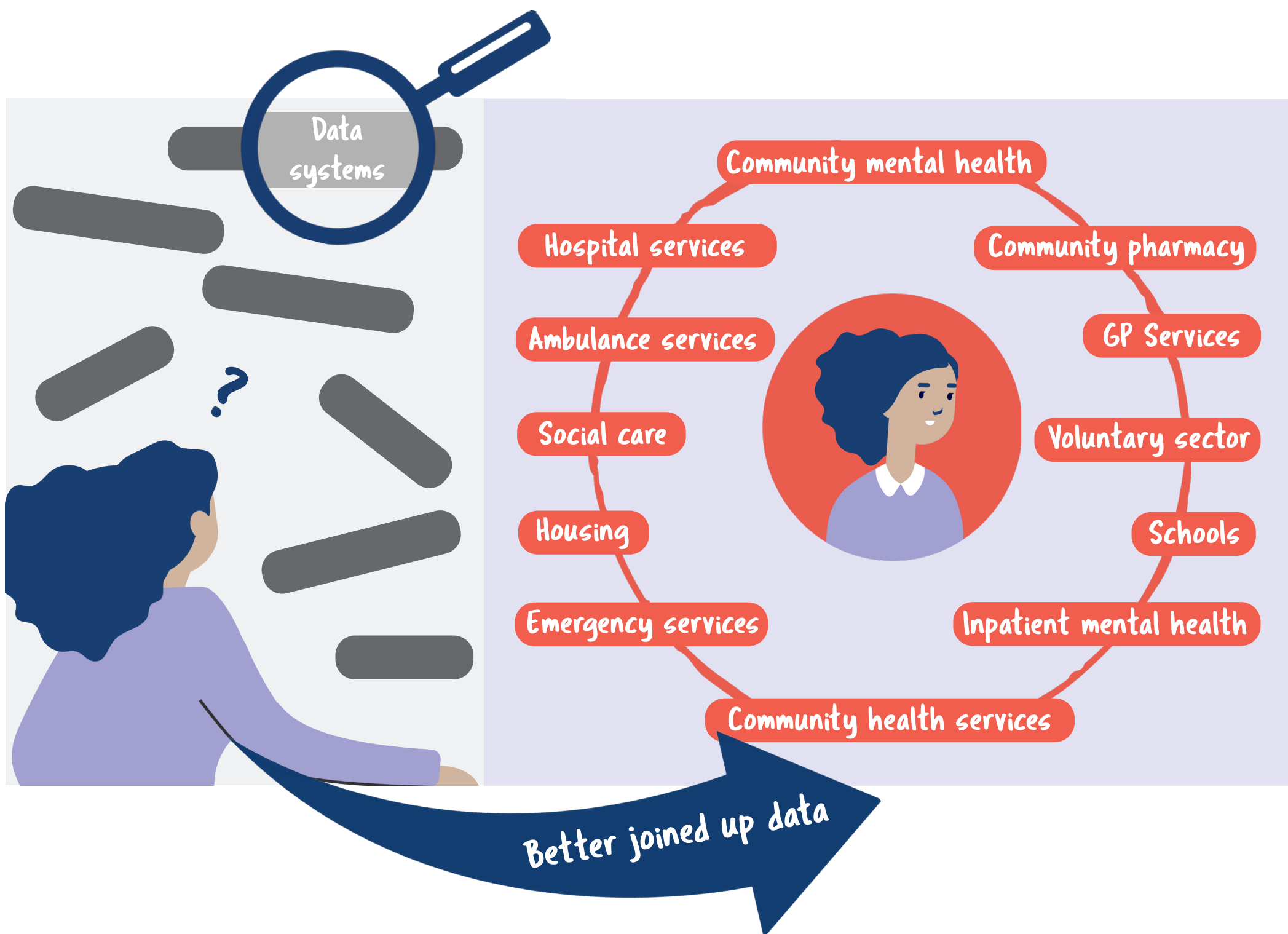
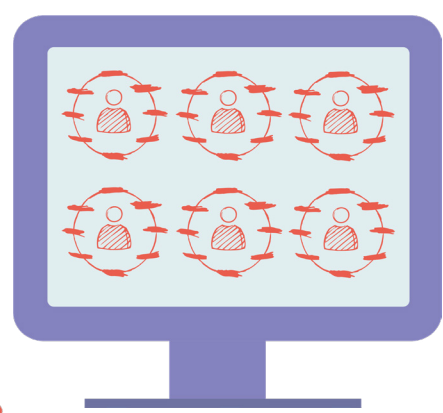


Integrated Care Systems are working to better join up care services
-> To do that, data and information systems also have to be better joined up



Bringing together records



How it's being used?

- ✓ Allows analysis of data on populations for service planning and research into new treatments and approaches
- ✓ Provides a picture of the pattern of care and care outcomes for different patient groups



What are the benefits?

Better planning and tailoring of services using analysis and research insight to meet the needs of local communities and patient groups

